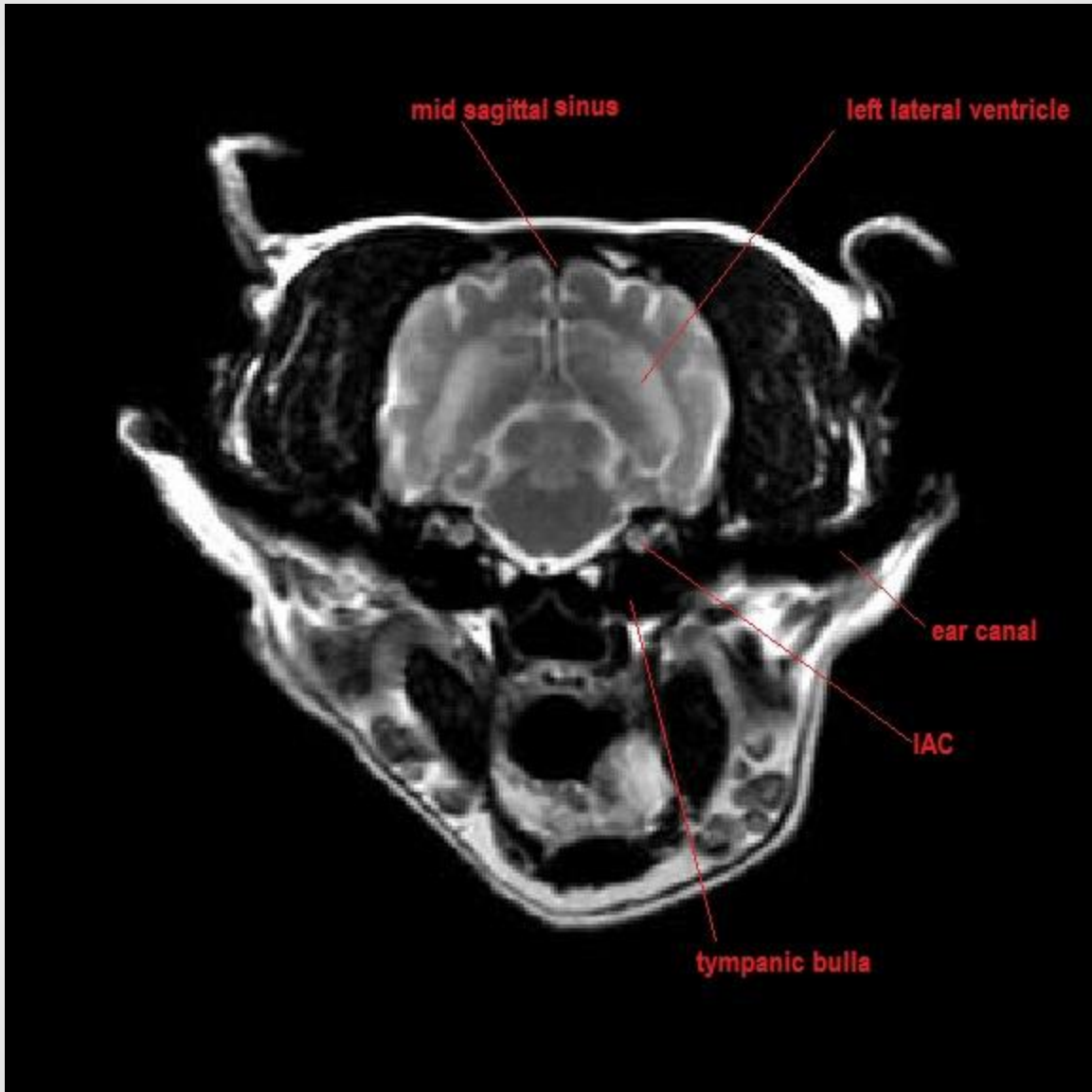


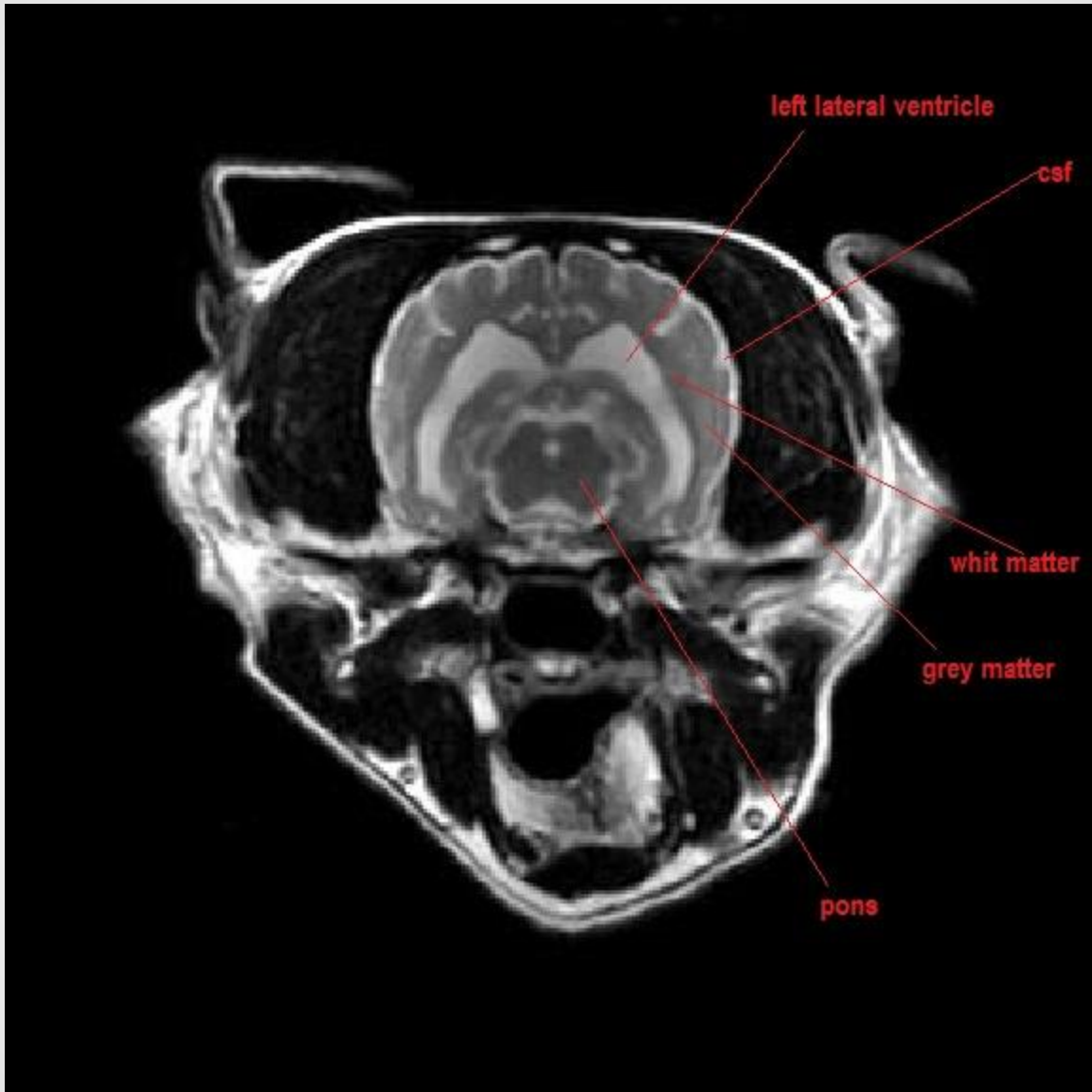
ethmoid sinus

left eye

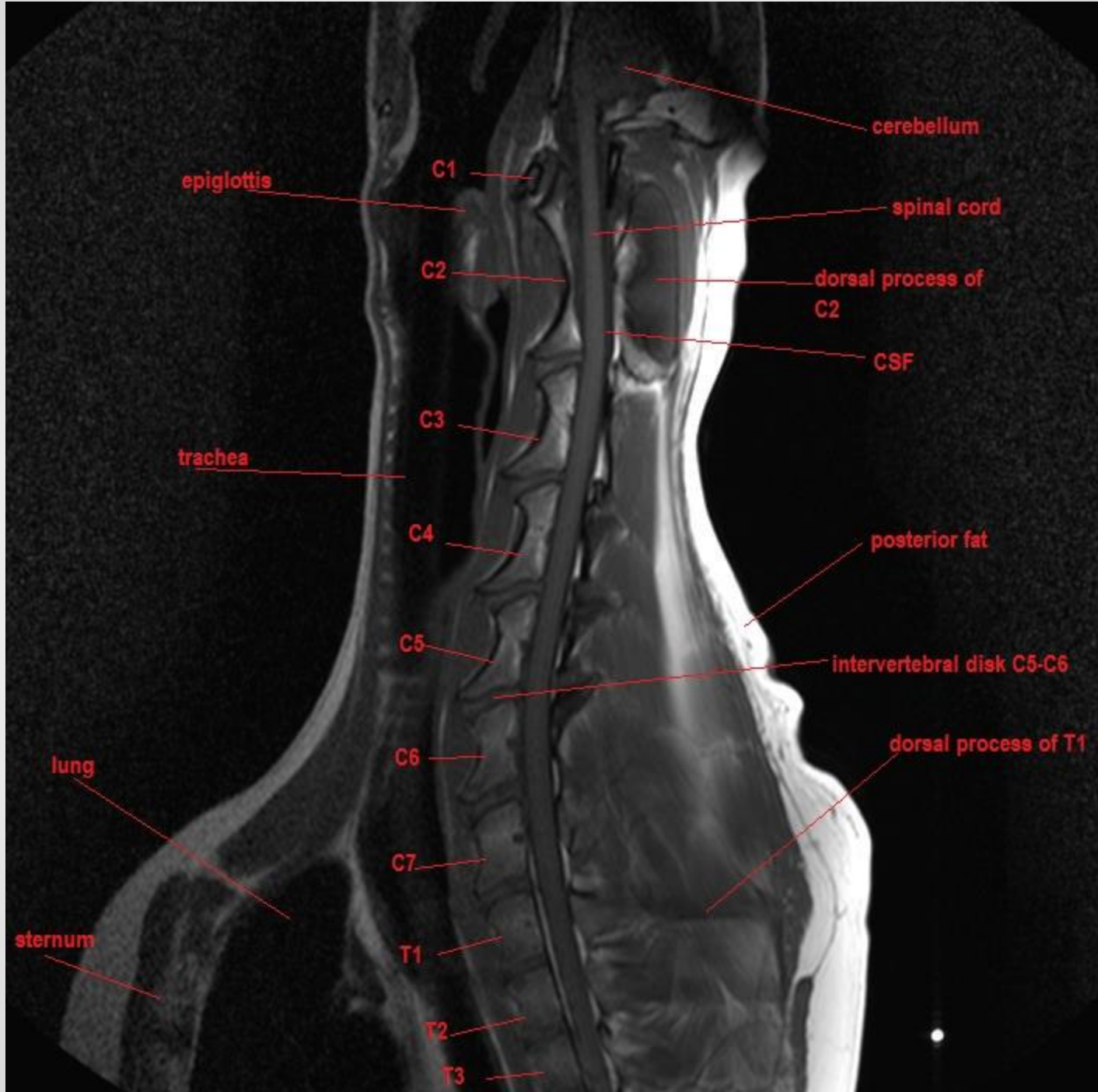
left lateral  
ventricle

midline of brain









cerebellum

spinal cord

dorsal process of C2

CSF

posterior fat

intervertebral disk C5-C6

dorsal process of T1

C1

C2

C3

C4

C5

C6

C7

T1

T2

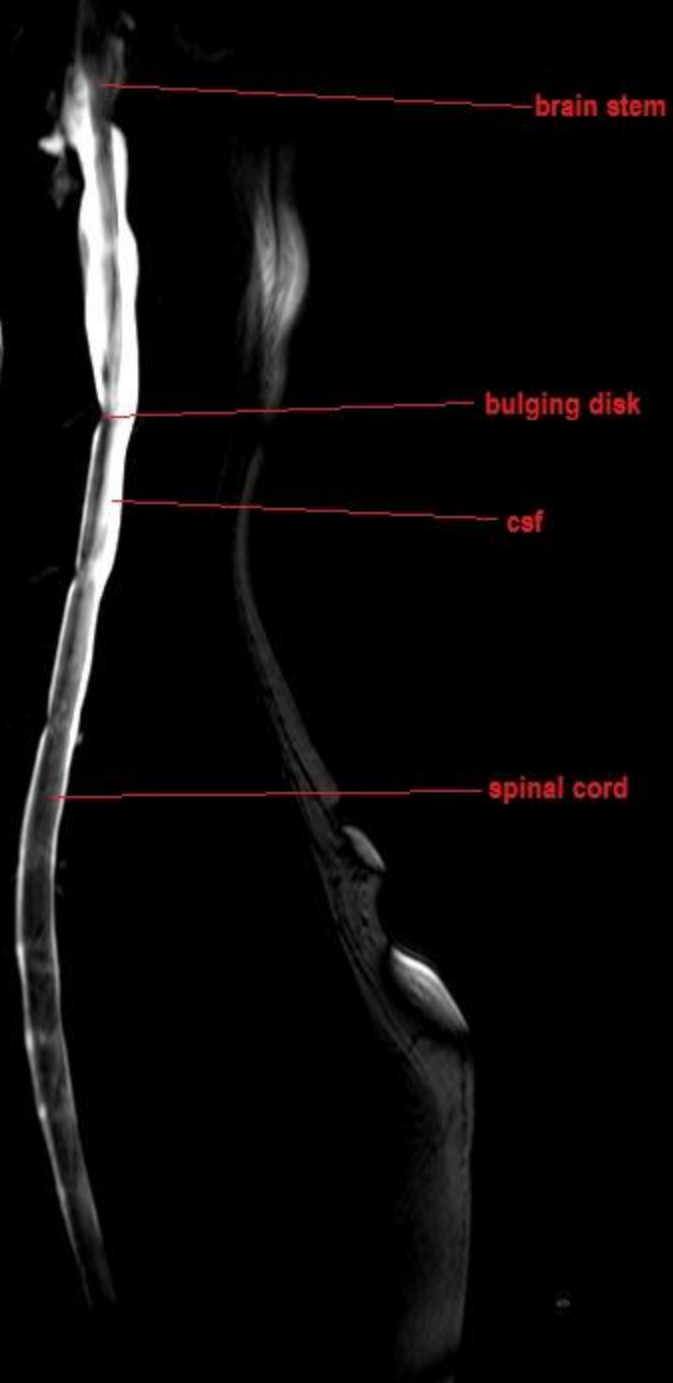
T3

epiglottis

trachea

lung

sternum



brain stem

bulging disk

csf

spinal cord





